

# Corinth

## Habitat Connectivity



**Beginning with Habitat (BwH)**

equips Maine communities, landowners, and conservation partners with tools to protect, restore, and connect important habitats and ecosystems in a changing climate.  
[www.beginningwithhabitat.org](http://www.beginningwithhabitat.org)

**Organized Towns**

**Area of Interest**

**Impervious Surface**

**Conserved Lands**

**Fee and Easement Conservation Land**

**Habitat Blocks**

Comprehensive Plan Review Criteria Rule (DACF Chapter 208) requires blocks >500 acres be considered important natural resources for town comprehensive planning.

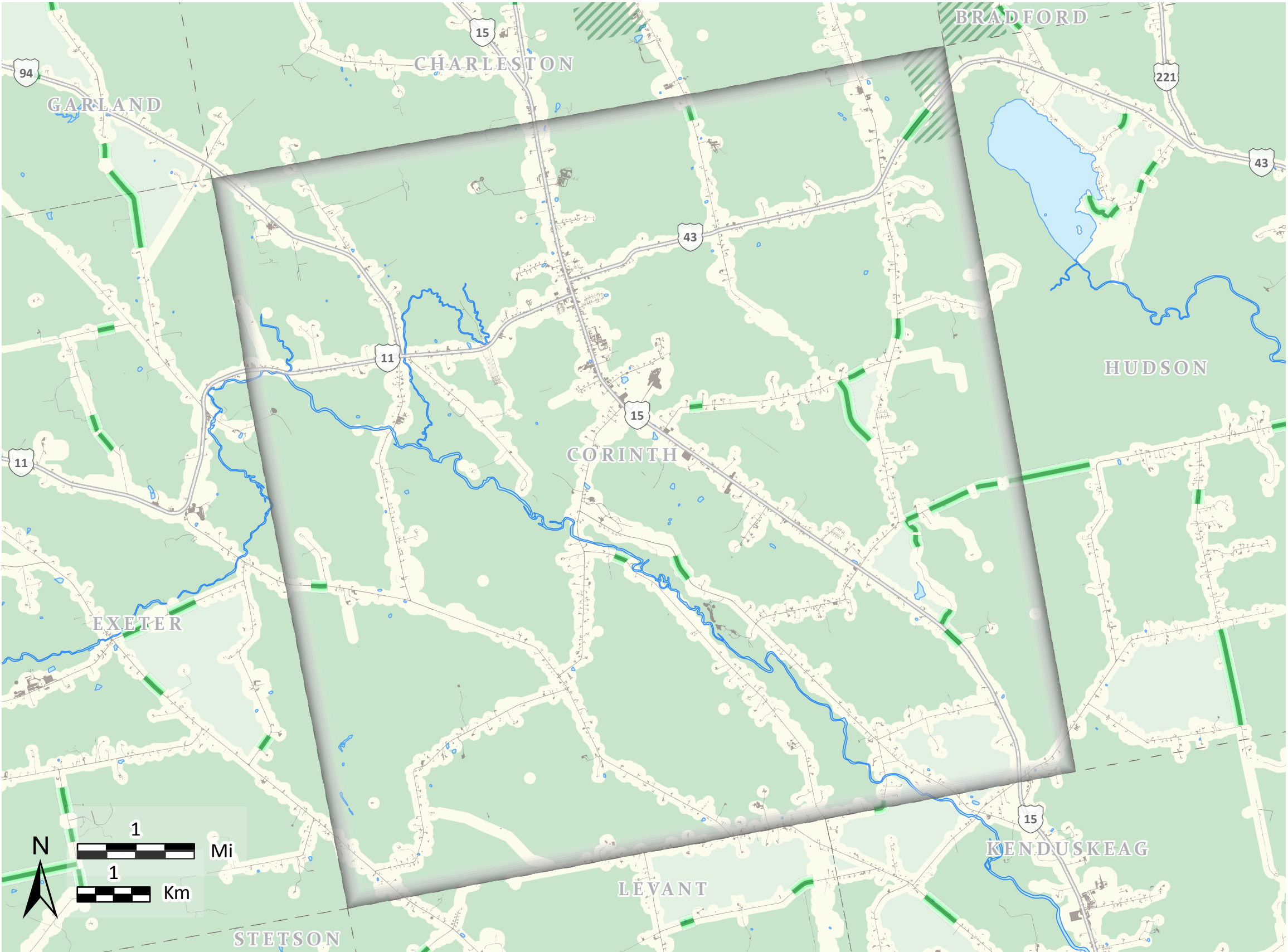
**0-500 Acres**

**500 + Acres**

**Development Buffer**

**Habitat Connectors**

**Likely Road Crossing Areas for Wildlife**



*This map is nonregulatory and is intended for planning purposes only*

April 2025

TOWNSHIP BOUNDARIES - ME  
Office of GIS (2021)  
IMPERVIOUS CCAP NOAA -  
impervious land cover (2022)  
HYDROLOGY - US Geological  
Survey (2016)  
UNDEVELOPED HABITAT BLOCKS &  
CONNECTORS - ME Dep of Inland  
Fisheries and Wildlife (2020)  
ROAD STREAM CROSSINGS - ME  
Dep. of Inland Fisheries and  
Wildlife (2022)

CONSERVATION LANDS -  
ME Dept of Ag., Cons., and For.,  
Land Use Planning Comm'n, ME  
Dep. of Inland Fisheries and  
Wildlife (2024)